

The Ashtons logo is displayed in white text on a dark blue rectangular background in the top right corner. The word "Ashtons" features a green leaf-like graphic element integrated into the letter 'A'.

Ashtons



99 Eastfield Avenue YO32 2EY

£1,250 PCM

3



1



1



C

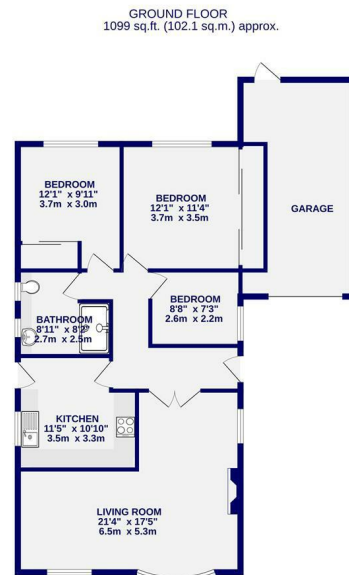


WE ARE NOW FULLY BOOKED FOR VIEWINGS ON THIS PROPERTY

A spacious three bedroom bungalow with driveway parking, garage and pebbled garden. Located in the popular village of Haxby, the property is also a short drive from the city centre and within minutes of a regular bus service to the centre. Offered unfurnished. Comprising Entrance hallway. Large reception room with bay window and gas fire. Good sized kitchen with electric oven, hob, fridge freezer, washing machine and dishwasher. Two double bedrooms with fitted wardrobes. Single bedroom. Modern bathroom with large shower cubicle. Single garage with electric door and tumble dryer. Front and rear pebbled garden. Ample driveway parking.

Available Now
Will consider a pet.

Council Tax Band D / 12 month tenancies / Deposit £1350 / EPC Rating C



TOTAL FLOOR AREA: 1099 sq.ft. (102.1 sq.m.) approx.
While every effort has been made to ensure the accuracy of the floorplan, measurements of rooms and any other areas are approximate. It is advised that the prospective buyer verify the accuracy of the measurements. This plan is for illustrative purposes only and should be used as a guide only for any prospective purchaser. The actual layout, fixtures and appliances shown may differ from those depicted on this plan and be governed by the actual property.
Made with Metagrip 12025



High Petergate Letters

01904 731404

lettings@ashtonsnet.com